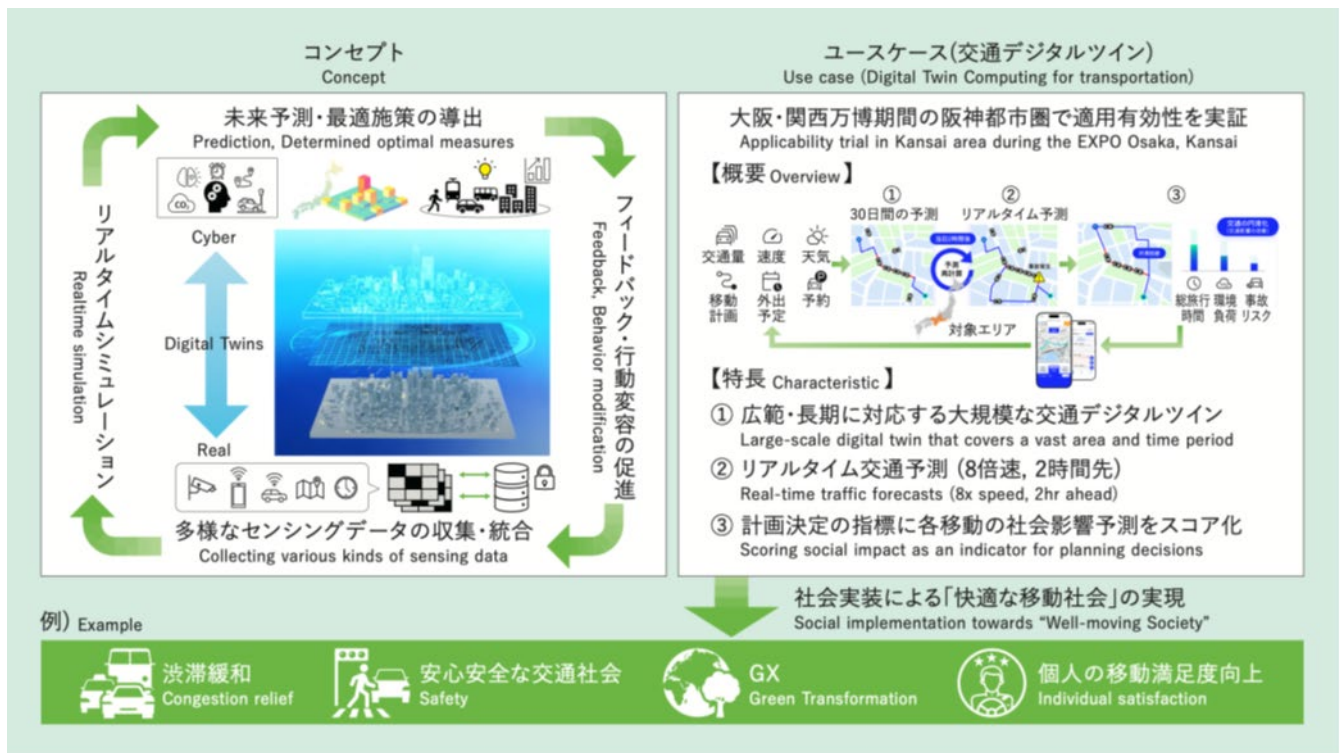


Analyze mobility big data in real-time and enable efficient mobility Optimize mobility/activity with 4D digital platform

Background and Technical Challenges

In conventional traffic flow simulations, real-time analysis was difficult due to the high computational load. The methods for influencing pedestrian and vehicle flows based on those results were also limited.



R&D Goals and Outcomes

Enable effective engagement for alleviating traffic congestion with our simulation and behavior change technology.

Key Technologies

01 Core Technologies

- Ultra-high-speed traffic simulation technology applicable to ordinary roads.
- Personalized behavior change technologies based on simulation data.

02 Key Differentiators

Ultra-fast traffic flow simulation (over 8x speed) that responds to non-routine traffic patterns and unexpected events using only minimal real-time wide-area data.

Use Cases Mobility & Transportation
Smart City

R&D phase Business

【Exhibitors】

NTT, Inc., NTT DATA JAPAN, NTT DATA GROUP Corp.

【Contact】

NTT IOWN Product Design Center

【External Partners】

Hanshin Expressway Company Limited

【Related Links】

<https://group.ntt.jp/newsrelease/2025/06/18/250618b.html>