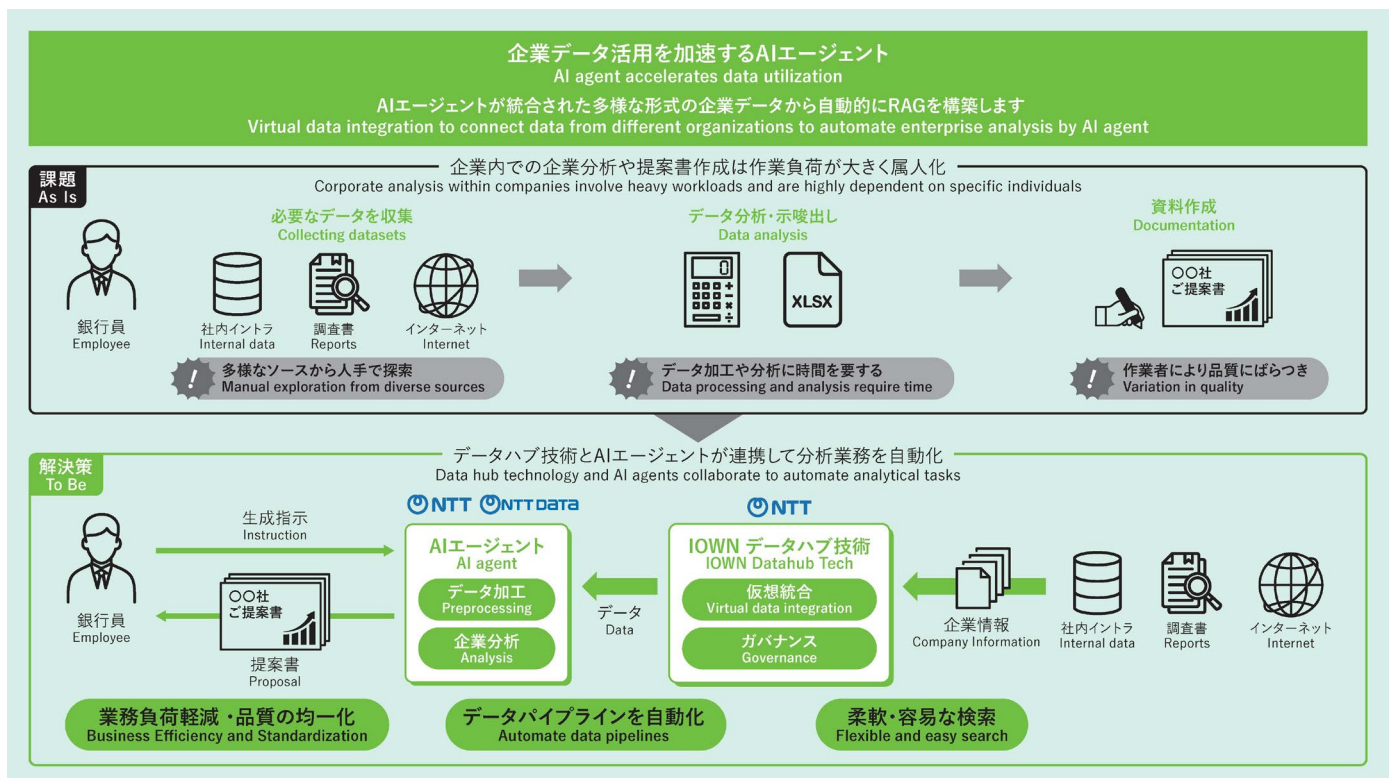


Virtual data integration to connect data from different organizations to automate enterprise analysis by AI agent AI agent accelerates data utilization

Background and Technical Challenges

Cross-sectional analysis is difficult due to the confidential nature of corporate analysis. Since the data format is not standardized, manual data preparation is required to improve the accuracy of the results.



R&D Goals and Outcomes

Maintain secure integration and governance of data of different organizations. Streamline data preparation.

Key Technologies

01 Core Technologies

AI agent that dynamically generates vector databases necessary for RAG using data from virtual data lakes.

02 Key Differentiators

Automate data preparation to obtain advanced responses from generative AI while maintaining secure data integration and governance between different operators.

Use Cases Financial Services

R&D phase Business

[Exhibitors]
NTT IOWN Product Design Center

[Contact]
Computing PF Promotion Project

[Co-exhibitors]
NTT DATA Japan Corporation

[Related Links]
-