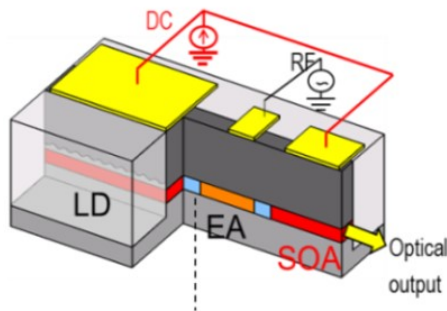


Laser, photodiode, and amplifier IC that enable long reach and high splitting ratio of optical metro-access networks

High-output-power laser
“AXEL”



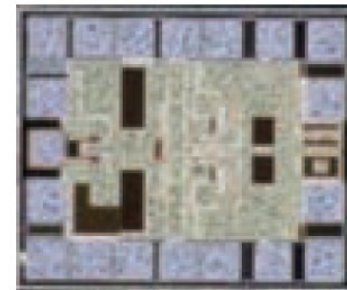
AXEL: SOA assisted
extended reach EA-DFB
Laser

High-sensitivity photodiode
“APD”



APD: Avalanche Photodiode

High-sensitivity amplifier IC
“BTIA”



BTIA: Burst-mode Transimpedance Amplifier

Used in OLT, ONU, CU, and DU, which carry out optical transmission/reception functions within optical metro-access networks